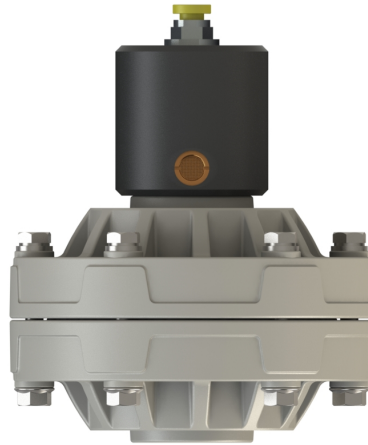


# D20

PP

PVDF+CF



1120

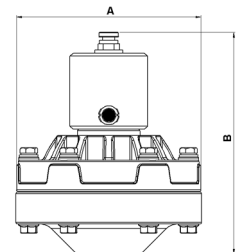
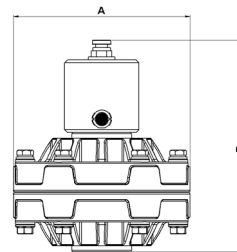
## Données Techniques

Raccords Fluide : 3/4"  
Raccord air : 6 mm  
Pression Max : 8 bars

1PMSQPNQFT  
7 - 18 - 30

## Dimensions

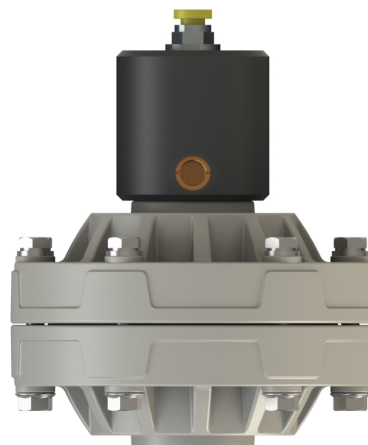
	PP	PVDF	Ø9
A (mm)	119	119	119
B (mm)	143	143	143
Poids kg	0,6	0,7	1,9
Température MAX	65°C	95°C	95°C
Température MIN	-4°C	-20°C	-20°C



# D25

PP

PVDF+CF



1120

## Données Techniques

Raccords Fluide : 1"  
Raccord air : 8 mm  
Pression Max : 8 bars

1PVSQPNQFT√  
50 - 65 - 100

## Dimensions

	PP	PVDF	Ø9
A (mm)	181	181	181
B (mm)	195	195	182
Poids kg	1,6	2	6,5
Température MAX	65°C	95°C	95°C
Température MIN	-4°C	-20°C	-20°C

